

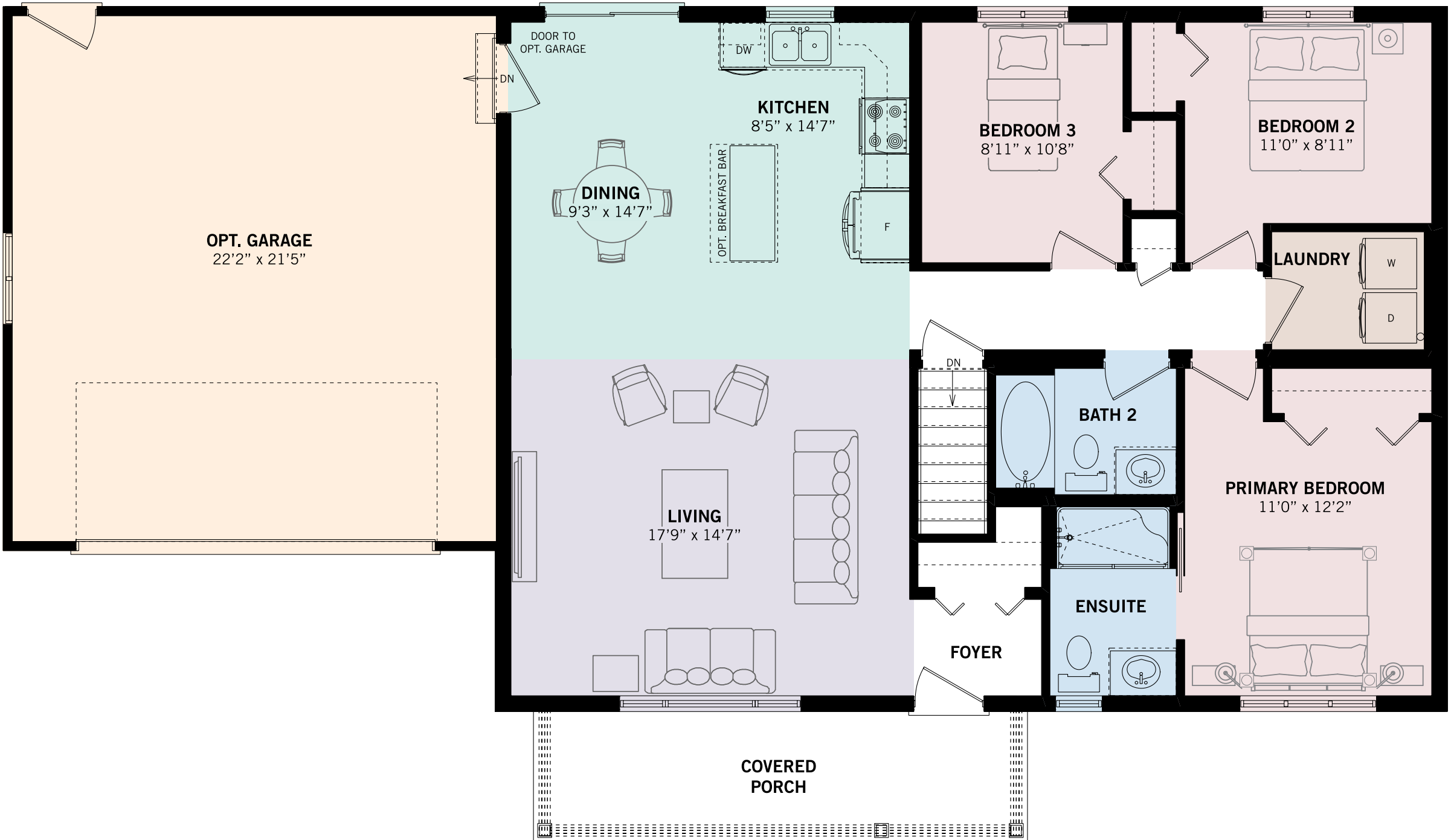
THE WOODSTOCK
ELEVATION B

BUNGALOW COLLECTION
WARMLY WELCOMING

3 BEDS | 2 BATHS



1,302 SQ. FT. (42'0" X 37'0")



Renderings are artist's concept and for visual representation only. Some optional features shown. Sizes and finishes may vary. All floor plans may be reversed to suit different configurations as per lot specifications. Decks, exterior railings and stairs are optional. E.&O.E.